

TRAITEUR WILLE

FEINE KOCHKUNST

Deck 10 Hamburg

The Speicherstadt, a world heritage site, and the HafenCity attract hundreds of thousands of visitors every year. Between these two architectural realms is the imposing historical Kaispeicher B (a quayside warehouse), the location of the International Maritime Museum Hamburg.

It houses the world's largest private collection with exhibits on maritime and naval history.

Accordingly, the floors of the building, which was constructed in 1878, were also renamed as decks. DECK 10, approximately 600 m² in size, is located in the attic of the quayside warehouse and offers a fascinating mixture of historical original scenery and a modern, elegant atmosphere.

This particular location can be easily reached via two spacious elevators and is perfectly suited for events of different sizes with its glass wall. Besides the historic maritime flair, the two 46 m² and 35 m² rooftop terraces offer the best views – of the Speicherstadt and the city of Hamburg, as well as the Elbe River, the port and HafenCity.

DECK 10 can accommodate up to 200 people on board. For cultural events, presentations or meetings and, of course, the most beautiful celebrations such as corporate parties, birthdays and weddings.



Deck 10 Hamburg

Ausstattung:

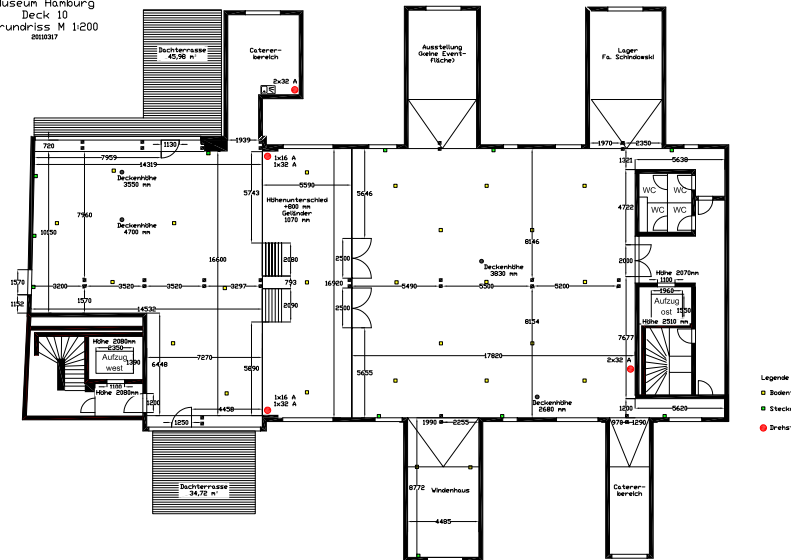
Features: furnishing according to number of guests (60 to 200 people) can be booked as a package or individually, banquet seating, seminar arrangement or lounge variation

Technical equipment: package arrangements can be booked according to event (such as a public address system and ambient lighting) or individual components such as ambient lighting, projector (5000 ansilumen), wireless microphone, headset, gooseneck microphone, projection screen, lectern and laptop for presentation

Usable area: around 600 m², including roof terraces of approx. 46 m² and 35 m² (can be divided with glass wall)

Capacity: from 60 up to 200 people

Internationales Maritimes
Museum Hamburg
Deck 10
Grundriss M 1:200
02/2017



Location:

City centre	1.3 km
Underground/train station	450 m
Airport	12 km
Hotel	750 m
Motorway	3.4 km